



Medicare Supplement Insurance

Basic Plan with Optional Riders

Filling in the gaps

Aetna Health Insurance Company

Wisconsin



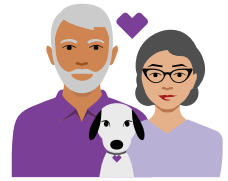
Our commitment to you

With insurance companies offering the same standardized Medicare Supplement insurance plans, we know that your choice comes down to the price that fits your budget, the company's service, reputation, reliability, and experience. Aetna Health Insurance Company with its administrative office located in the Nashville, Tennessee area, has an unwavering commitment to providing the best personal service possible, quick claims payment, quality products with solid financial backing, and helpful, friendly associates with extensive knowledge and experience. Policyholders rely on our company to be there when they need us. We take those obligations very seriously and everything we do is focused on fulfilling our commitments in a timely, hassle-free manner – so you have the best experience possible.

This is a brochure for individual Medicare Supplement insurance policy form AHIMSP22BC WI and is not a contract of insurance. For complete details of all benefits, please read your Outline of Coverage and policy carefully and refer to the "Guide to Health Insurance for People with Medicare."

The value of peace of mind

A Medicare Supplement insurance policy helps you manage and budget your health care expenses.



Filling in the gaps

Medicare provides beneficial coverage for health related expenses, but it does not cover all health care expenses. There are a number of gaps in Medicare coverage that you either pay for out-of-pocket or with private insurance. A Medicare Supplement insurance policy is a health insurance policy (also called Medigap) sold by a private insurance company to help fill in some of those gaps.

Know your options

Although private insurance companies provide Medicare Supplement coverage, Medicare Supplement insurance plans are strictly regulated by both federal and state government. Make an informed decision about what is right for you. Before you purchase a plan, make sure you understand what your Medicare coverage includes. Then choose a Medicare Supplement plan that best fits your needs.

Take care of yourself

A Medicare Supplement insurance policy helps you manage and budget your health care expenses with predictability and stability. Unexpected medical expenses can put your savings at risk. A Medicare Supplement insurance policy may offer financial security by helping you pay some of the out-of-pocket costs for Medicare-approved services and works hand-in-hand with Medicare to provide more insurance coverage.

Feel good about your choices

A Medicare Supplement insurance policy has no restrictive networks, visit the physicians of your choice who accept Medicare patients, including specialists and specialty hospitals. With automatic claims filing by most providers, you have less things to worry about.



Financially strong, fundamentally sound

When you choose to own an Aetna Health Insurance Company Medicare Supplement insurance policy, you get the first class customer service, financial stability, and security that come from being a member of the Aetna family of companies.

Choose from these plans

Aetna Health Insurance Company offers a Medicare Supplement plan that provides basic benefits and optional riders offering more comprehensive coverage.

Premiums also vary according to the amount of coverage provided by a specific plan. A household premium discount is available for eligible applicants. (Reference the application for details.)

Here are the benefits that are included with the basic plan, along with the optional riders.

Benefit/rider	Basic benefits	Optional riders
Hospice Care	•	
Part B coinsurance	•	
Skilled nursing facility coinsurance	•	
Part A deductible (optional)		•
Foreign travel emergency (optional)		•
Part B excess charges (optional)		•
Part B deductible* (optional)		•
Additional home health care (optional)		•
Part B copayment or coinsurance** (optional)		•

* Available for people first eligible for Medicare before January 1, 2020 only.

** Requires \$20 copayment for office visits; \$50 copayment for emergency room visits. Copayments do not count toward the annual Part B deductible.

Covering your needs

Use this checklist as a starting point to help determine what you want your Medicare Supplement insurance policy to cover.



- | | |
|---|--|
| <input type="checkbox"/> Basic benefits (including hospice care) | <input type="checkbox"/> Medicare Part B excess charges |
| <input type="checkbox"/> Medicare Part A deductible | <input type="checkbox"/> Skilled nursing facility coinsurance |
| <input type="checkbox"/> Medicare Part B deductible | <input type="checkbox"/> Foreign travel emergency |
| <input type="checkbox"/> Medicare Part B coinsurance | |

What's great about the plans

The following are features of Medicare Supplement plans.



30 days free look

Return any policy for any reason within 30 days after receipt for a full refund of all premiums paid.

12-month rate guarantee

No rate increase for the first 12 months, as long as the premiums are paid on time.

Guaranteed renewable

No worries of reduced benefits or canceled coverage for the life of the policy, as long as the premiums are paid on time.

Freedom to choose your doctors

You control and choose the physicians who you trust for your care.

Go direct to your doctors

You can go directly to the physicians and specialists you choose without pre-certifications and pre-approvals.

Benefits stay the same (deductibles may change)

You always know what your benefits are with this standardized plan...no surprises or re-evaluations year-after-year.

Portable coverage

You are not restricted to use a network of health care providers. If you move, your coverage goes with you.



Common terms and definitions

Coinsurance

A percentage of Medicare-approved expenses not paid by Medicare.

Copayment

A fixed fee amount that subscribers to a medical plan must pay when using specific services covered by an insurance plan.

Deductible

Amount that one must pay for Medicare-approved expenses before Medicare begins to pay.

Eligible expenses

Costs that are deemed medically necessary by Medicare and covered expenses under your plan.

Excess charges

The difference between what a health care provider is permitted to charge and the Medicare-approved amount.

Hospice care

A program of care and support for someone who is terminally ill; helps them live out the time they have remaining to the fullest extent possible.

Medicare-approved amount

In original Medicare, the amount that a physician who accepts assignment can be paid, including what Medicare pays and any other deductibles, coinsurance, or copayments.

Premium

The periodic payment to Medicare, an insurance company, or a health care plan for coverage.



About Aetna

Aetna is one of the nation's leading diversified health care benefits companies, serving consumers with information and resources to help them make better informed decisions about their health care. Aetna offers a broad range of traditional, voluntary and consumer-directed health insurance products and related services, including medical, pharmacy, dental, behavioral health, group life and disability plans, and medical management capabilities and health care management services for Medicaid plans. Our customers include employer groups, individuals, college students, part-time and hourly workers, health plans, governmental units, government-sponsored plans, labor groups and expatriates. Aetna is a member of the CVS Health family of companies. For more information, see [Aetna.com](https://www.aetna.com).



Aetna Health Insurance Company

Wisconsin

Aetna is the brand name used for products and services provided by one or more of the Aetna group of subsidiary companies, including Aetna Health Insurance Company and its affiliates.

Aetna Health Insurance Company is not connected with or endorsed by the U.S. Government or the Federal Medicare Program.

[AetnaSeniorProducts.com](https://www.aetna.com/seniorproducts)

©2023 Aetna Inc.

